

OVERVIEW AND SCRUTINY

ANNUAL REPORT 2014 - 15

Contents

	Page Nos.
Foreword	3
Overview and Scrutiny Revised Structure	4
Impacts and Achievements 2015/16	5-8
Review of Overview and Scrutiny 2015/16	
• Overview and Scrutiny Management Committee (OSMC)	9-10
• Health and Adults Social Care Overview and Scrutiny Panel	11-12
• Children and Young People Overview and Scrutiny Panel	13-14
• Regeneration and Housing Overview and Scrutiny Panel	14-15
• Community and Environment Overview and Scrutiny Panel	16-17
Moving Forward and Priorities for 2015/16	18
Contacting Overview and Scrutiny	19

Foreword

I am pleased to present this report detailing the work undertaken by the Overview and Scrutiny Management Committee (OSMC) and the four Scrutiny Panels during 2014/15.

This report aims to provide a summary of some of the key work undertaken by Overview and Scrutiny during the previous municipal year, particularly where we feel there has been an impact either in shaping future policy, enhancing knowledge and understanding or challenging decision makers as appropriate.

A new outcome focused structure was introduced to scrutiny from June 2014 with OSMC undertaking a stronger scrutiny and co-ordination role. The Panels focused on reviewing topics in-depth to provide suggestions for improvement on such areas as Educational Attainment, the new waste collection contract and the delivery of additional housing.

A new Health and Adult Social Care Panel was also established to develop stronger links with the Health and Well Being Board and other partners to support improvements to the health of people in the Borough. The Panel also carries out the Council's formal Health Scrutiny responsibilities.

This change has provided flexibility for Scrutiny to respond to important issues of public concern that have arisen during the course of the year. An example of this is the review undertaken of the Council and partnership arrangements to protect against Child Sexual Exploitation.

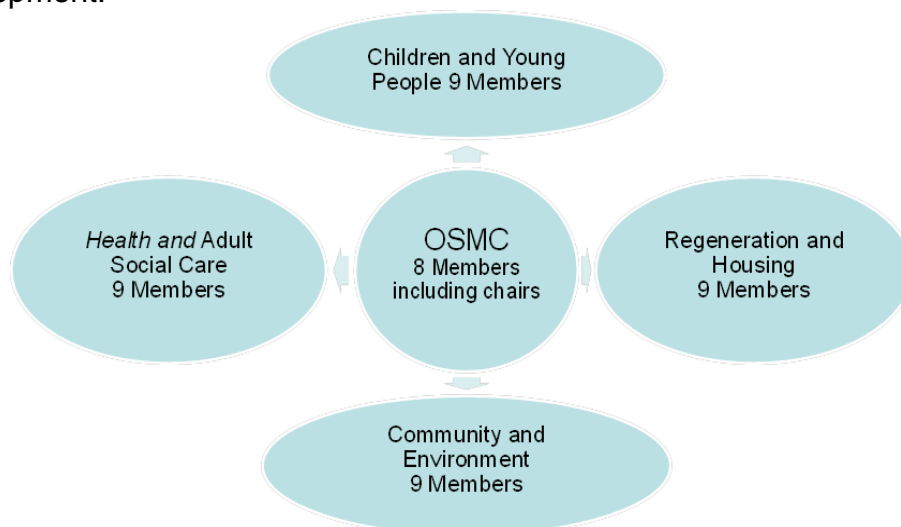
Finally, I would like to take this opportunity to thank all officers, partners, and Councillors who have contributed to the Overview and Scrutiny process over the last 12 months. I hope that our work will continue to support the delivery of the Borough's priorities by challenging performance, improving accountability and exploring potential solutions to service delivery as the Council seeks to respond to significant reduction in its resources.



Councillor John Mounsey
Chair of the Overview and Scrutiny Management Committee 2014/15

Overview & Scrutiny Revised Structure

During 2014/205, a new structure was introduced with the intention of overview and scrutiny function being more outcomes focused. Whilst OSMC retained a strategic overview, the Panels have endeavoured to review issues in-depth seeking to support the delivery of priorities and adding value and a unique perspective to future policy development.



Key features of the new arrangements have included:

- OSMC operating as a business committee for the Overview and Scrutiny function covering all aspects of Council and partnership activity (except Health). Overview and Scrutiny Panel Chairs have been included within the membership of OSMC and have had a key role in co-ordinating the overarching Overview and Scrutiny work programme.
- The Overview and Scrutiny Panels focusing mainly on undertaking a small number of in-depth reviews and reporting their findings and recommendations back to OSMC.
- The establishment of a new Panel to focus on health scrutiny and adult social care with specific powers to hold health colleagues to account.

Work undertaken by the Panel's has been based around the following areas:-

- **Children and Young People's Panel** – Has undertaken a review on educational attainment for Children and Young People and provided a critical friend to the Children's Services Trust and Chair of the Safeguarding Board to challenge particularly in its arrangements for addressing Child Sexual Exploitation.
- **Regeneration and Housing Panel** - Key areas have included undertaking reviews into the effectiveness of the process for consultation in respect of those Community Assets defined as 'surplus' and Delivering Additional Housing in Doncaster.
- **Community and Environment Panel** – This has focused on the Council's Waste Collection contract, the Community, Voluntary and Faith Strategy and has held the Safer Doncaster Partnership to account for its activities..
- **Health and Adult Social Care** – Has considered issues that fall within the remit of the Public Health Directorate, the Health and Well-being Board, adult social care and wider health and statutory health issues, for example, Loneliness and Better Care Fund.

Impacts and Achievements

Detailed below are some of the key impacts and achievements resulting from overview and scrutiny activities during 2014/2015. Further details are included in the summary of the Overview and Scrutiny Management Committee (OSMC) and Panel sections.

Challenge and Critical Friend Role - Holding decision makers to account publicly promotes good governance by increasing transparency and accountability. All Cabinet Members and Directors have attended Overview and Scrutiny meetings during the year to respond to questions from Scrutiny Members. This has been particularly useful in allowing the Executive to set out their priorities for the year and identifying the extent to which they have been delivered.

The Children and Young People Overview and Scrutiny Panel challenged the Chair of the Safeguarding Board and provided a critical friend role when he presented the Board's Annual Report of the Board's activities and Assurance Report relating to Child Sexual Exploitation. The impact of this was to provide assurances that safeguarding the Borough's children and young people was a priority and effective mechanisms and processes are in place.

Cabinet decisions relating to the following were "called-in" by Scrutiny Members i.e. reviewed by OSMC prior to implementation. These decisions included proposals to modernise the current day centres for older people and adults with a learning disability and to close the Council's seven residential care homes for older people. This process enabled Members to understand what the decision sought to achieve the impact of the home closures on those residents affected and consider the robustness of the consultation process.

A further Cabinet Decision relating to 'Recommendations for Implementing a Selective Licensing Scheme for Private Sector Landlords in Hexthorpe' was also "called-in". This course of action allowed Members to consider several issues including the effectiveness of the consultation process, in particular, equality issues. As a result of a comprehensive meeting that was held, the Committee supported the decision and requested that the performance of the scheme be reported back to OSMC six months after it has been implemented. It was recommended that the Council's arrangements for Community Engagement and Consultation be included to the Overview and Scrutiny work programme for 2015/2016.

Contribution to key policy development – Review work was a key focus for Overview and Scrutiny as this enabled it to consider important issues in detail and put forward proposals for improvement. Some of the key review work that has taken place this year includes development of the voluntary strategy in partnership with voluntary organisations, housing strategies, Corporate Plan and the new model for "Help to Live at Home". These are detailed later in this report but all share common elements in that Members were able to engage face to face with service users or clients through site visits and hear first-hand about their experiences. This enabled Scrutiny Members to gain a greater understanding of the issues for those receiving the service, conclude how partnership activity was being co-ordinated and identify any gaps in provision.

Pre-decision scrutiny - Pre decision scrutiny serves a useful purpose in allowing Members to review a decision before it is taken and identify any areas where it believes improvements can be made. As part of the changes made to during this year, OSMC has now taken on the role of considering pre-decision scrutiny. Some of the examples of this includes; Transport for Day Centres and the Transfer of third party of Council's Residential Care Homes for Older People. Prior to this decision being taken by Cabinet, Officers took this issue to OSMC and held very detailed discussions which gave the public and Members an extended opportunity to discuss the issue.

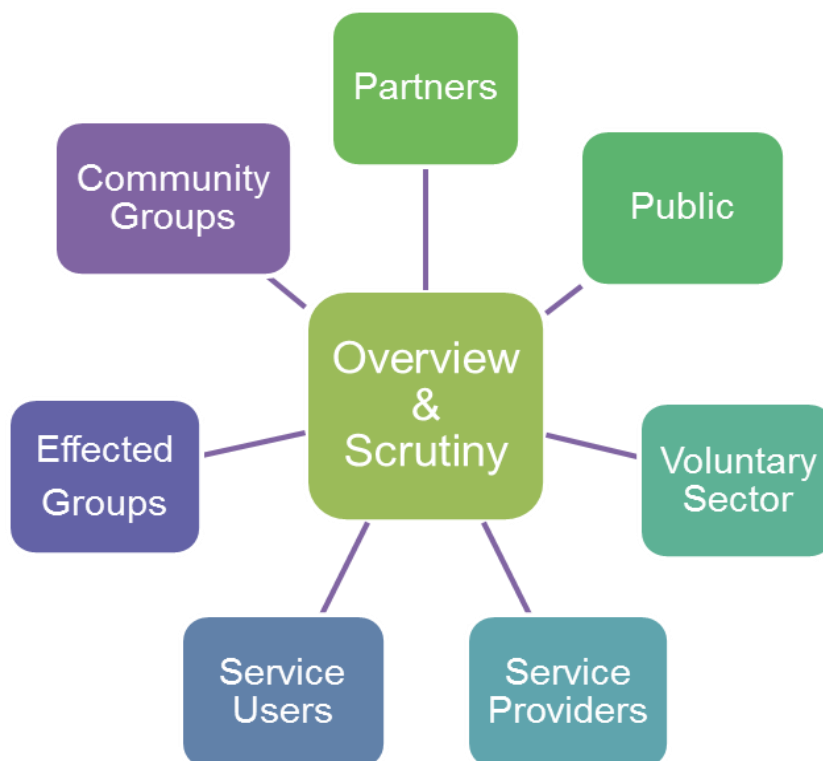
Supporting performance monitoring arrangements – OSMC has continued to rigorously review performance through a single report presented to the Committee. As the Council reshapes services in response to budget cuts, Overview and Scrutiny has a key role in ensuring performance monitoring arrangements remain robust and services continue to be delivered effectively. Directors and Cabinet Members have attended meetings to answer questions particularly about how they are addressing under performance or projected overspends and this has enhanced transparency and accountability of service delivery. These meetings have provided an opportunity for Members to challenge Cabinet Members and officers as well as some of our key partners e.g. St Leger Homes Doncaster and the Children's Trust. This is important in bringing accountability to those organisations that work in partnership with the Council to deliver services.

Budget review and financial monitoring - OSMC Members have played an important role in supporting the Council's financial planning processes. This year Members considered the Council's 2015/16 – 2016/17 Budget Proposals and paid particular attention to the proposals to bridge the £16.1m funding gap as well as implementation of the wider £109m savings over the period 2014/15 – 16/17. The Committee held a number of meetings and workshops focusing on the impacts of the proposals, how they will be delivered and how they support corporate priorities. OSMC has regularly reviewed the budget position identifying areas where actions could be taken to address overspends and provided constructive feedback as part of its response. This has included recommending further actions to increase personalisation and direct payments to address pressures on adult social care and to improve outcomes for adults. Through effective public challenge OSMC's involvement has contributed towards robust budget monitoring processes.

Supporting regional working – The Health and Adult Social Care Overview and Scrutiny Panel has continued to support the work of the Yorkshire and Humber Joint Health Overview and Scrutiny Committee which considers changes to health service provision across the whole of the Yorkshire and Humber area. The Committee has more recently been involved in reviewing a proposed Congenital Heart Disease (CHD) Standards and Service Specification, which was launched for public consultation by NHS England at the end of 2014. This response sets out the main observations of the joint committee following a series of meetings, discussions with key stakeholders (including commissioners, service providers and patient representatives) and consideration of a range of information.

Further regional Scrutiny will take place next year when a Joint Scrutiny Committee will review the activities of the Sheffield City region Combined Authority. This Committee which includes Member representatives will provide an opportunity to undertake Overview and Scrutiny of the wider sub regional economy and key issues such as employment housing and transport.

Public and partnership engagement – Engaging with the public in Overview and Scrutiny can be particularly challenging, however, throughout the year there have been some good examples and we would like to take the opportunity to thank partners, stakeholders and community members mentioned in this report for taking part in the process. They have contributed by either providing evidence, information for discussion and debate or by providing effective challenge, particularly concerning the reviews into the Delivery of Additional Housing, Education Improvement, spotlight review into Loneliness in the Borough and development of the Voluntary Community and Faith Strategy. The Cabinet decisions around the proposed closure of Care Homes and Day Centres provided a platform for members of the public to make their views known and ask questions about how the decisions were made and understand the impact of the decisions. Members of the public have attended formal scrutiny meetings for a number of issues of interest to them and made formal statements to Scrutiny Members.



The table below lists all those from external organisations that have participated in the overview and scrutiny process this year.

Age UK	House builders
Adults Safeguarding Board (Chair)	New Horizons
AMEC	NHS England
Changing Lives	Older People Parliament Representative
Children and Young People (Individuals)	Rotherham Doncaster and South Humber
Children's Safeguarding Board (Chair)	NHS Foundation Trust (RDaSH)
Children's Trust	Safe at Last
CVS	School Representatives - School
CQC	Governors/Business Managers and Head
Doncaster and Bassetlaw Hospitals Foundation Trust	Teachers from a range of Infant, Primary, Junior Schools, Academies and Community Colleges.
DRASACS (Doncaster Rape and Sexual Abuse Counselling Service)	Shanks
Doncaster Royal Infirmary	Sita
Doncaster Healthwatch	South Yorkshire Police
Doncaster NHS Clinical Commissioning Group (CCG)	St Leger Homes Doncaster
Health and Wellbeing Board	Women's Institute
Headteachers	Waste Action Recycling Programme (WRAP)
Housing Associations	

Overview and Scrutiny Management Committee



**COUNCILLOR
JOHN MOUNSEY**

**CHAIR OF THE
OVERVIEW AND
SCRUTINY
MANAGEMENT
COMMITTEE
(2014/15)**

A new key focus for the Committee during 2014/15 following the introduction of a new scrutiny structure, was to agree and monitor the work programmes of the standing Panels and identify issues for Scrutiny review.

Finance and Improvement - The Committee has continued to consider the quarterly Finance and Improvement reports focusing on how key areas of overspend and underperformance are being addressed. Question planning sessions have been used prior to these meetings to ensure there is a more systematic approach to identifying and structuring key questions and lines of enquiry.

Budget Proposals – The Committee ensured robust measures were in place to effectively review and monitor the current budget and performance of Council Services and support the Council in agreeing a budget. This was undertaken through budget workshops in January and February 2015 with a continued focus on the proposals to address the £16.1m budget gap. The Committee considered the extent to which the proposals were evidence based, supported corporate and Borough wide priorities, and sought to understand the capacity and risks around deliverability and implementation. The

Committee's deliberations were presented to Council in February.

Pre-Decision Scrutiny - The Committee was able to engage with members of the public and facilitate an opportunity to ask questions to the Mayor about the Future of Residential Care Homes and Day Care Centres for Older People and Adults with a Learning Disability. As part of its review, the Committee considered the robustness of the consultation process and how transition to new arrangements would be managed to reduce the impact on service users. In respect of the residential care homes, assurances were sought as to how issues raised around improving standards and quality of care in the independent sector would be addressed.

The Committee put forward a number of comments and suggestions to help inform and advise the Cabinet before making its decision. Some of the key suggestions around the future of care homes included ensuring there was adequate future capacity, careful management of transferring residents to new homes and to continue to look for alternative options. The Committee supported the view that the Council should work to effectively help stimulate and shape the market to ensure quality residential care was available in the Borough. The Committee also recognised the need for greater marketing and awareness of personalised budgets as a means of supporting residents to live longer in their own homes.

The Committee gave further consideration to the issue of care homes at its meeting in January, when it considered a progress report on the

programme to transfer the Council's seven residential care homes.

Challenge and Critical Friend Role –

To gain a greater understanding of the effectiveness of Council and multi-agency co-ordinated activities, consideration was given to the work of the Stronger Families Programme as a means of reducing anti-social behaviour and crime, improving school attendance and supporting adults in families into work. Reviewing the Programme provided an opportunity for the Committee to consider how effectively partnership working was taking place to deliver outcomes and early help strategies to turn around the lives of those families identified through the programme.

Partnership Arrangements – The Committee received a presentation which outlined the Council's strategic partnership arrangements to consider how effective overview and scrutiny of partners can be undertaken. Following a discussion around the partnership charter the Committee identified that further consideration should be given by the Committee to the Partnership's Risk Management Framework.

Health and Adult Social Care Overview and Scrutiny Panel



COUNCILLOR
TONY REVILL

CHAIR OF THE
ADULTS AND
COMMUNITIES
PANEL (2014/15)

In establishing the new overview and scrutiny structure it was agreed that this Panel would have a wider remit in reviewing and monitoring quality and activities relating to health and social care issues often in partnership with a number of health bodies and agencies.

Ongoing Learning - Due to the many changes in the health landscape the Scrutiny Panel took the opportunity to enhance Member learning and understanding by reviewing how the NHS works. This included partner input to review the roles of Public Health, the Clinical Commissioning Group (CCG), NHS England, Health Watch and Care Quality Commission (CQC) and a specific overview of Children's Health issues and Unplanned Care and working together Model.

Scrutiny - Examples of other areas that the Panel contributed to include the Better Care Fund where it considered the extent to which it was meeting national and local challenges. It also looked at the Commissioning of Model of Home Support and Members were supportive of the proposed model. The more personalised approach to care was welcomed by the Panel with all comments made to the Executive taken on board. The Panel will continue its work by considering issues that are recognised both locally and nationally, for example, on combined partner actions and examples of safe discharge from hospitals under the Better Care Fund.

The Panel held a spotlight review on loneliness and social inclusion to gather an understanding about loneliness in the Borough, how it was being addressed and identifying examples of work being carried out in the borough. The review meeting was attended by a number of representatives from community organisations, the Older People's Parliament and partners such as the Doncaster NHS Clinical Commissioning Group, Age UK, New Horizons and Doncaster CVS. The Panel also made recommendations aimed at improving communication of events and groups in the borough and look at how and where services are targeted.

Partnership working - The Panel has regularly met with partners throughout the year. As well as a Joint Workshop with the Health and Well Being Board was held to consider care and challenges in response to the Francis recommendations. The Chair of the Adult Safeguarding Board also attended the Panel and Members took the opportunity to seek further information on activities detailed in the Annual Report.

Policy development - The Panel considered a report setting out an update on the proposed refresh of the Joint Health and Wellbeing Strategy. Members discussed any gaps and elements of the Strategy that were still current including the health of children and young people, well-being education and how legal highs were being addressed. The issue of legal highs were further looked at in more detail by the Community and Environment Panel.

Joint Health Overview and Scrutiny Committee The Joint Yorkshire and

Humber Regional Scrutiny Committee has continued to meet to consider information from NHSE (National Health Service England) LTHT (Leeds Teaching Hospital Trust), Embrace (the dedicated neonatal and paediatric transport services) and Children's Heart Surgery Fund. Details of the discussions were used to provide the Joint Committee's draft response to the proposed service specification and draft standards arising from the new Congenital Heart Disease review.

A response was provided that sets out the main observations of the committee following a series of meetings, discussions with stakeholders (including commissioners, service providers and patient representatives) and consideration of a range of information. The areas that the Committee specifically commented on included; Stakeholder Involvement, Implications of the Proposed Standards, Finance and Affordability and Networks.

Children & Young People Overview and Scrutiny Panel



COUNCILLOR
RACHEL HODSON

CHAIR OF THE
SCHOOLS, CHILDREN
AND YOUNG PEOPLE
PANEL (2014/15)

The work undertaken by Members of the Children and Young People Scrutiny Panel, focused on educational attainment, the newly established Children's Trust Board and Doncaster Children's Safeguarding Board.

Review Work – Improving the educational attainment of all Doncaster's children and young people is of paramount importance to all Members. There is an aspiration to ensure that all pupils from all backgrounds receive a high quality education and the qualifications they need in order to reach their full potential. The Panel recognised that currently this is not the case in Doncaster, and wished to explore what is already in place to improve educational attainment, and what further activities could be undertaken. In addition the Panel was aware of the changes in Doncaster's educational landscape as more schools become Academies. The Panel wished to gain further information on the relationship between Doncaster MBC and Academies across the borough and how the relationship supports improving attainment within these schools. To achieve this, Members held six meetings and site visits where they were able to meet with Council officers, Head teachers of both primary and secondary schools, the Teaching School Alliance and gave consideration to Ofsted results the Education Action Plan, examination

results and outcome of the Local Authority Governors' Review.

It was highlighted to the committee that when schools originally transferred to Academy status, due to such changes in the education landscape relationships between schools and the Local Authority became strained, however, throughout the review it became evident that this was an area of great improvement. The Panel's Co-opted Member for Education, who is a Doncaster Head teacher, confirmed that support and challenge received by the Local Authority was the best it had been for some time, and what was included in the Education Action Plan was being put into practice.

Recommendations from the review were forwarded to the Executive and included: Academies and Academy sponsors being continually and robustly challenged, improved partnership working, encouragement of local councillors making contact and developing relationships with schools in their wards, Councillors enhancing links with schools in their wards and the Overview and Scrutiny Team promoting the need to have a full complement of Governors represented on Overview and Scrutiny through Governors Forum meetings.

Challenge and Critical Friend – Following the establishment of the Doncaster Children's Services Trust in the autumn, the Panel received updates from the Trust's Chief Executive of progress on the new operational model and addressed challenges that were highlighted.

A second major piece of work undertaken, using 10 key Scrutiny

questions, sought assurance on how the Local Authority and partners were responding to Child Sexual Exploitation (CSE) in Doncaster. Members held full and frank discussions and were satisfied with assurances provided in response to their concerns. This information was reported back to full

Council to ensure there was a wider understanding of how this was being addressed. Updates on the two aforementioned issues will continue to be considered by the Panel, particularly the Trust's performance under the Local Authority's and Children's Services Trust Agreement.

Regeneration and Housing Overview and Scrutiny Panel



**COUNCILLOR
JOHN MCHALE
CHAIR OF THE
REGENERATION
AND HOUSING
PANEL (2014/15)**

The remit of the Regeneration and Housing Overview and Scrutiny Panel is to consider issues relating to regeneration, economic development, strategic transport or housing. Two reviews undertaken during 2014/15 by the Panel included Assets and the Delivery of Additional Housing:

- **Assets Review** - This review considered the effectiveness of the process for consultation with the Communities on community buildings defined as 'surplus' by the Council's own Assets Review.

The review was undertaken through a series of workshop style meetings and considered the draft process for Community Consultation; The Community Leases Policy; Examples of best practice; Examples of Community assets likely to be included in such a consultation and finally the Implementation plan for Community Consultation and gaining member/community support.

The recommendations focused on identifying ways to support community groups wishing to undertake a transfer of assets, ways in which surplus properties could be identified and promoted to the community, and finally reviewing the monitoring and processes in place to improve effectiveness.

Scrutiny's own review resulted in robust recommendations centred on

Strategy (Policy Development) - The Panel considered the latest versions of the Housing Strategy, Sub Strategies, Delivery Plan and Evidence Base including key strategy objectives. Members were supportive of the strategies and recognised the importance of them interlinking with each other and also that the Housing Strategy should not be considered as a stand-alone document.

Housing Review - During December 2014 and February 2015, the Regeneration and Housing Overview and Scrutiny Panel undertook a review into the delivery of Additional Housing. The purpose of this review was to identify barriers and consider opportunities to assist housing developers to build houses on sites within the Borough.

The Panel agreed that the review should be undertaken through a series of informal meetings and that one of those meetings should involve house builders and Housing Associations (including larger national and smaller local organisations). That meeting itself was attended by 16 representatives who participated in a frank and valuable discussion which provided an opportunity for housing organisations to bring to life the barriers and challenges around housing development in the Borough and put forward potential solutions which could be supported by the Council.

The final meeting provided an opportunity for Members of the Panel to use the information gathered to challenge Council officers and to consider what positive changes could be made.

improving experiences and support for housing organisations (particularly

smaller developers) and raising the profile of housing at the Sheffield City Region and as well as, the profile and marketing of Doncaster.

Communities and Environment Overview and Scrutiny Panel



COUNCILLOR
JANE KIDD

CHAIR OF THE
COMMUNITIES AND
ENVIRONMENT
OVERVIEW AND
SCRUTINY PANEL
(2014/15)

The work undertaken during 2014/15 by the Communities and Environment Overview and Scrutiny Panel included an in-depth review on Waste Collection, policy development work into the Council's Community Voluntary and Faith Sector Strategy and providing appropriate challenge to the Safer Stronger Doncaster Partnership.

From August 2014 to March 2015, the Panel undertook a series of informal meetings and a site visit as part of a review to consider the Council's waste collection contract. The purpose of the review was to ensure a greater understanding of the issues relating to the current waste collection service and future service provision, ensuring that it is robust and fit for purpose.

The Panel received a wide range of information to enable it to make recommendations that will identify any further actions by the Council and its partners to improve the waste collection service. It was agreed by the Panel that the review would be undertaken during a series of informal meetings to consider strategic issues and a site visit to the Private Finance Initiative waste facility at Manvers.

During these meetings, the Panel have received an overview of the current position including a refresh of the Private Finance Initiative (PFI) and Waste Transfer, an update on the

review of winter waste collection arrangements and an outline of the Barnsley Doncaster Rotherham (BDR) joint waste strategy development.

The Panel has looked at different receptacles available, examples of incentive schemes, education and communication, collection contract development and potential options for shared services. As well as meeting with Officers, the Panel has held discussions with key partners and stakeholders including Sita, Shanks, Waste Recycling Action Programme (WRAP) and AMEC. A number of recommendations were formed with a key focus around consultation and communication. The Panel also recommended that review should continue and that further meetings should be held as part of the 2015/16 workplan around the planned consultation process and the results.

The second review contributed to the development of the Community Voluntary and Faith Sector Strategy. Members discussed feedback from Community meetings and at a meeting with voluntary groups including Community Voluntary Sector (CVS), New Horizons, Age UK, Changing Lives and Doncaster Rape and Sexual Abuse Counselling Service, Members undertook a SWOT (Strengths Weakness Opportunity Threats) analysis of the provision which shaped the policy. The discussions addressed the effectiveness of the joined up approach by the Council its partners and agencies in working together to identify where gaps in provision exist.

Acting in its capacity as the Crime and Disorder Committee, the Panel has met formally on two occasions to

consider Safer Stronger Doncaster information, substance misuse and the Police and Crime Panel Protocol. At its meeting looking at substance misuse, Members recognised the issues resulting from the lack of legislation in respect of Novel Psychoactive Substances (NPS) otherwise known as 'legal highs' and asked the Mayor to give consideration to writing to local MP's about how the issue affects groups in the Doncaster community.

Partnership priorities and performance Representatives from the SSDP Board and Group were invited to the meeting.

The second meeting of the Committee focused on crime statistics and mechanisms to address specific problem areas were considered where Members held the partnership to account by challenging the robustness of data provided

Overview and Scrutiny Priorities 2015/16

Overview and Scrutiny Management Committee will:

- Agree and monitor the effectiveness of Overview and Scrutiny Panel work programmes and manage and co-ordinate Overview and Scrutiny activities;
- Receive and monitor review work of the Panels and monitor outcomes;
- Continue to focus on ensuring performance is effectively monitored;
- Continue to review how effectively the Council's finances are being managed, particularly in respect of delivering the savings identified through the budget process;
- Engage with the Executive to review budget proposals.
- Where appropriate undertake pre-decision scrutiny and ensure effective Overview and Scrutiny of key policy issues.
- Review the Council's arrangements for engagement and consultation.
- Partnership Risk Management Framework
- Review of Appointments to Outside Bodies and Partnerships
- Impact of Welfare Reforms

Children and Young People:

- Review into support provision for Children's Disabilities
- Continue to receive updates from the Doncaster Children's Services Trust
- Consider the Doncaster Children's Safeguarding Board Annual Report
- School Improvement Inspection Report
- Annual Complaints – Children's Trust
- Youth Service Provision
- Monitor examination results
- Child Sexual Exploitation – Update on 10 key scrutiny questions
- Adoption – Annual Update/Review

Regeneration and Housing:

- Place Marketing – Development of the Doncaster brand.
- Skills – looking at barriers to employment.
- Action Plan – following Delivery of Additional Housing Review

Community and Environment:

- Environment – Continuation of review of the waste collection contract with a particular emphasis on consultation.
- Community Safety - Review of the activities and effectiveness of the Community Safety partners
- Voluntary Community and Faith Strategy Update
- Review of Internal Drainage Boards
- Delivery Energy Efficiency Improvements e.g. Solar Panels

Health and Adult Social Care:

- Implementation of the Care Act
- Public Health Self-Assessment
- Healthy High Street
- Modernisation and Peer Review Plan
- Implications of an Ageing Population
- Children's Health – Early Years 0-5 years
- Review of Arrangements to deliver High Quality Care for People in Residential Homes/Care Homes/Admissions to Long Term Care
- Public Health Protection Responsibilities
- Integration of Health Colleagues
- Regional Joint Health Overview and Scrutiny Committee

Contacting Overview and Scrutiny

For further information about this Annual Report or any aspect of Overview and Scrutiny work in Doncaster, please contact any of the following:-

Andrew Sercombe
Governance and Member Services Manager
Telephone: (01302) 734354
Email: andrew.sercombe@doncaster.gov.uk

Christine Rothwell
Senior Governance Officer
Telephone: (01302) 735682
Email: christine.rothwell@doncaster.gov.uk

Caroline Martin
Senior Governance Officer
Telephone: (01302) 734941
Email: caroline.martin@doncaster.gov.uk

You can also visit our website at: www.doncaster.gov.uk

Address: Doncaster Council
Governance Services
Finance and Corporate Services Directorate
Civic Office
Waterdale
Doncaster
DN1 3BU
Email: scrutiny@doncaster.gov.uk

All reports considered at Overview and Scrutiny Panel meetings (unless exempt items) are available to the public. You can see them by visiting Doncaster Council's Website or by requesting a copy from the Overview and Scrutiny Team.

The Governance Services Team is happy to respond to any enquiries about the work of Overview and Scrutiny. Please do not hesitate to get in touch if you would like to find out more about the Overview and Scrutiny Management Committee and the Panels' work programmes for the forthcoming year, or if you have any comments that you would like to make.